

BALLET

My First Ballet Class, Intro To Ballet, Pre-Primary & Primary

Girls			
Item	Brand	Colour	Info
Leotard (Cap Sleeved) with Skirt Attached	1 st Position Milly Voile	CORAL	
Cardigan (3/4 Length Sleeves)	1 st Position Cotton/Poly X Over	PALE PINK	Cardigans can be worn over leotards & students are able to keep these on to dance in. Any other layers will be asked to be removed during class
Convertible Ballet Tights	Silky High Performance	PINK	Students can wear either tights or socks. Usually tights are preferred in the colder months & swapped for socks in the warmer months. TIGHTS come up SMALL, our youngest students are in Age 7-9. We recommend going up sizes if your child has long legs & bigger tights are always better to dance in & less likely to ladder.
Ballet Socks	1 st Position	PINK	See above. Socks are true to size.
Leather Ballet Shoes	1 st Position	PINK	We have found leather ballet shoes to be the most lasting during classwork. BALLET SHOES come up SMALL, so we would recommend PURCHASING ONE SIZE UP (sometimes one & half sizes, if student's feet are wide).



HAIR: MUST BE SECURED OFF FACE & NECK (Short hair to be out of the face as best as possible).

Boys			
Item	Brand	Colour	Info
Leotard (Cap Sleeved)	1 st Position	WHITE	If boys are uncomfortable wearing a leotard, they may wear a t-shirt in replacement. NB: They may need to wear a leotard for exams.
Boys Ballet Shorts	1 st Position	BLACK	
Ballet Socks	1 st Position	WHITE	
Leather Ballet Shoes	1 st Position	WHITE	We have found leather ballet shoes to be the most lasting during classwork. BALLET SHOES come up SMALL, so we would recommend PURCHASING ONE SIZE UP (sometimes one & half sizes, if student's feet are wide).



KLDA reserves the right to adapt the uniform list.
In the event that any changes are made, the revised uniform shall be posted on the website www.kristielouisedanceacademy.co.uk immediately.

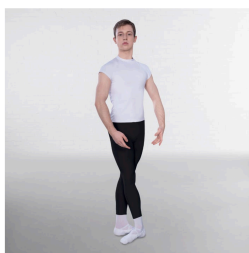
Grades 1-4

Girls			
Item	Brand	Colour	Info
Leotard (Cap Sleeved)	1 st Position	CORAL	
Cardigan (3/4 Length Sleeves)	1 st Position Cotton/Poly X Over	PALE PINK	Cardigans can be worn over leotards & students are able to keep these on to dance in. Any other layers will be asked to be removed during class
Convertible Ballet Tights	Silky High Performance	PINK	Students can wear either tights or socks. Usually tights are preferred in the colder months & swapped for socks in the warmer months. TIGHTS come up SMALL, our youngest students are in Age 7-9. We recommend going up sizes if your child has long legs & bigger tights are always better to dance in & less likely to ladder.
Ballet Socks	1 st Position	PINK	See above.
Leather Ballet Shoes	1 st Position	PINK	We have found leather ballet shoes to be the most lasting during classwork. BALLET SHOES come up SMALL, so we would recommend PURCHASING ONE SIZE UP (sometimes one & half sizes, if student's feet are wide).



HAIR: BALLET BUN IS PREFERRED BUT MUST BE SECURED OFF FACE & NECK (Short hair to be out of the face as best as possible).

Boys			
Item	Brand	Colour	Info
Leotard (Cap Sleeved)	1 st Position	WHITE	If boys are uncomfortable wearing a leotard, they may wear a t-shirt in replacement. NB: They may need to wear a leotard for exams.
Boys Ballet Shorts	1 st Position	BLACK	Students can wear either shorts or leggings.
Male Leggings	1 st Position	BLACK	
Ballet Socks	1 st Position	WHITE	
Leather Ballet Shoes	1 st Position	WHITE	We have found leather ballet shoes to be the most lasting during classwork. BALLET SHOES come up SMALL, so we would recommend PURCHASING ONE SIZE UP (sometimes one & half sizes, if student's feet are wide).



KLDA reserves the right to adapt the uniform list.
In the event that any changes are made, the revised uniform shall be posted on the website
www.kristielouisedanceacademy.co.uk immediately.

Grades 5+

Girls			
Item	Brand	Colour	Info
Any Style Leotard	Any Style	BLACK	For classwork, students are able to wear ANY STYLE leotard. This is encouraged to be worn without bras being shown & students should be comfortable to wear the leotard with the correct underwear to remain smart. To find your own individual leotard we encourage you to look on www.dancedirect.com Or similar sites.
EXAM LEOTARD: Bra-tech	Capezio	BLACK	For exams, students will need to wear this leotard. This can also be worn for classwork. This leotard comes with a built-in bra so is preferred by bustier students. We also use this style of leotard in show work.
Cardigan (3/4 Length Sleeves)	1 st Position Cotton/Poly X Over	BLACK	Cardigans can be worn over leotards & students are able to keep these on to dance in. Any other layers will be asked to be removed during class
Convertible Ballet Tights	Silky High Performance	PINK	Students can wear either tights or socks. Usually tights are preferred in the colder months & swapped for socks in the warmer months. TIGHTS come up SMALL, our youngest students are in Age 7-9. We recommend going up sizes if your child has long legs & bigger tights are always better to dance in & less likely to ladder.
Split Sole Canvas Ballet Shoes	Any Brand	PINK	We suggest trying these on before purchasing as it does depend on the foot. BALLET SHOES come up SMALL, so we would recommend PURCHASING ONE SIZE UP (sometimes one & half sizes, if student's feet are wide).

HAIR: MUST WEAR A BALLET BUN & BE SECURED OFF FACE (Short hair to be out of the face as best as possible).

Boys			
Item	Brand	Colour	Info
Leotard (Cap Sleeved)	1 st Position	WHITE	If boys are uncomfortable wearing a leotard, they may wear a t-shirt in replacement. NB: They may need to wear a leotard for exams.
Male Leggings	1 st Position	BLACK	
Ballet Socks	1 st Position	WHITE	
Leather Ballet Shoes	1 st Position	WHITE	We have found leather ballet shoes to be the most lasting during classwork. BALLET SHOES come up SMALL, so we would recommend PURCHASING ONE SIZE UP (sometimes one & half sizes, if student's feet are wide).

All items above (except individual style leotards) can be purchased from our KLDA Shop located on our website.

KLDA reserves the right to adapt the uniform list.
In the event that any changes are made, the revised uniform shall be posted on the website www.kristielouisedanceacademy.co.uk immediately.

MODERN

Intro To Modern, Primary & Grade 1

Girls			
Item	Brand	Colour	Info
Leotard (Cap Sleeved) with Skirt Attached	1 st Position Milly Voile	CORAL	
Cardigan (3/4 Length Sleeves)	1 st Position Cotton/Poly X Over	PALE PINK	<i>Cardigans can be worn over leotards & students are able to keep these on to dance in. Any other layers will be asked to be removed during class</i>
Convertible Ballet Tights	Silky High Performance	PINK	<i>During Modern, students use the convertible to change them into footless tights so they can dance bare feet.</i>
Bare Feet			

HAIR: MUST BE SECURED OFF FACE & NECK (Short hair to be out of the face as best as possible).

Boys			
Item	Brand	Colour	Info
Leotard (Cap Sleeved)	1 st Position	WHITE	<i>If boys are uncomfortable wearing a leotard, they may wear a t-shirt in replacement. NB: They may need to wear a leotard for exams.</i>
Boys Ballet Shorts	1 st Position	BLACK	
Bare Feet			

Grades 2-4

Girls			
Item	Brand	Colour	Info
Leotard (Cap Sleeved)	1 st Position	CORAL	
Cardigan (3/4 Length Sleeves)	1 st Position Cotton/Poly X Over	PALE PINK	<i>Cardigans can be worn over leotards & students are able to keep these on to dance in. Any other layers will be asked to be removed during class</i>
KLDA T-Shirt	Any Style	BLACK or Show T-Shirt	<i>Students can wear their KLDA T-shirts as an alternative to cardigans. They may be asked to be removed if the teacher requires to see their body line/posture better.</i>
Convertible Ballet Tights	Silky High Performance	PINK	<i>During Modern, students use the convertible to change them into footless tights so they can dance bare feet.</i>
Footless Tights	Silky	BLACK/FLESH	<i>Footless tights can be worn over the leotard, underneath & with or without shorts</i>
Dance Shorts	KLDA Branded/Plain	BLACK	<i>Dance shorts can be worn over the leotard in Modern classes. These can be worn over the leotard, or over tights if they are wearing tights as well.</i>
Dance Leggings	KLDA Branded/Plain	BLACK	<i>Dance leggings can be worn over the leotard in Modern classes. These can also be worn over ballet tights.</i>
Bare Feet			

HAIR: BALLET BUN IS PREFERRED BUT MUST BE SECURED OFF FACE & NECK (Short hair to be out of the face as best as possible).

*KLDA reserves the right to adapt the uniform list.
In the event that any changes are made, the revised uniform shall be posted on the website
www.kristielouisedanceacademy.co.uk immediately.*

Boys			
Item	Brand	Colour	Info
Leotard (Cap Sleeved)	1 st Position	WHITE	<i>If boys are uncomfortable wearing a leotard, they may wear a t-shirt in replacement. NB: They may need to wear a leotard for exams.</i>
KLDA T-Shirt	Any Style	BLACK/WHITE or Show T-Shirt	<i>Students can wear their KLDA T-shirts as an alternative to leotards.</i>
Boys Shorts	1 st Position	BLACK	<i>Students can wear either shorts or leggings.</i>
Male Leggings	1 st Position	BLACK	
Bare Feet			

Grades 5+

Girls			
Item	Brand	Colour	Info
Any Style Leotard	Any Style	BLACK	<i>For classwork, students are able to wear ANY STYLE leotard. This is encouraged to be worn without bras being shown & students should be comfortable to wear the leotard with the correct underwear to remain smart. To find your own individual leotard we encourage you to look on www.dancedirect.com Or similar sites.</i>
Cardigan (3/4 Length Sleeves)	1 st Position Cotton/Poly X Over	BLACK	<i>Cardigans can be worn over leotards & students are able to keep these on to dance in. Any other layers will be asked to be removed during class</i>
KLDA T-Shirt	Any Style	BLACK or Show T-Shirt	<i>Students can wear their KLDA T-shirts as an alternative to cardigans. They may be asked to be removed if the teacher requires to see their body line/posture better.</i>
Convertible Ballet Tights	Silky High Performance	PINK	<i>During Modern, students use the convertible to change them into footless tights so they can dance bare feet.</i>
Footless Tights	Silky	BLACK/FLESH	<i>Footless tights can be worn over the leotard, underneath & with or without shorts</i>
Dance Shorts	KLDA Branded/Plain	BLACK	<i>Dance shorts can be worn over the leotard in Modern classes. These can be worn over the leotard, or over tights if they are wearing tights as well.</i>
Dance Leggings	KLDA Branded/Plain	BLACK	<i>Dance leggings can be worn over the leotard in Modern classes. These can be worn over ballet tights.</i>
Bare Feet			
Foot Thongs	Any	FLESH	<i>Students will need to turn bare feet. Some students may feel discomfort with bare feet so can wear foot thongs as an alternative.</i>

HAIR: MUST WEAR A BALLET BUN & BE SECURED OFF FACE (Short hair to be out of the face as best as possible).

*KLDA reserves the right to adapt the uniform list.
In the event that any changes are made, the revised uniform shall be posted on the website www.kristielouisedanceacademy.co.uk immediately.*

Boys			
Item	Brand	Colour	Info
Leotard (Cap Sleeved)	1 st Position	WHITE	<i>If boys are uncomfortable wearing a leotard, they may wear a t-shirt in replacement. NB: They may need to wear a leotard for exams.</i>
KLDA T-Shirt	Any Style	BLACK/WHITE or Show T-Shirt	<i>Students can wear their KLDA T-shirts as an alternative to leotards.</i>
Boys Shorts	1 st Position	BLACK	<i>Students can wear either shorts or leggings.</i>
Male Leggings	1 st Position	BLACK	
Bare Feet			

All items above (except individual style leotards & foot thongs) can be purchased from our KLDA Shop located on our website.

TAP

Intro To Tap & Primary

Girls			
Item	Brand	Colour	Info
Leotard (Cap Sleeved) with Skirt Attached	1 st Position Milly Voile	CORAL	
Cardigan (3/4 Length Sleeves)	1 st Position Cotton/Poly X Over	PALE PINK	<i>Cardigans can be worn over leotards & students are able to keep these on to dance in. Any other layers will be asked to be removed during class</i>
Convertible Ballet Tights	Silky High Performance	PINK	<i>Students can wear either tights or socks. Usually tights are preferred in the colder months & swapped for socks in the warmer months.</i>
Ballet Socks	1 st Position	PINK	
Low Heel Full Sole Tap Shoes	Bloch Timestep	BLACK	<i>We recommend all students have these tap shoes. They are the best quality & create the best sound for the student's feet. If tap shoes are worn without heel taps, you may be asked to purchase heel taps to help students execute the best footwork.</i>

HAIR: MUST BE SECURED OFF FACE & NECK (Short hair to be out of the face as best as possible).

Boys			
Item	Brand	Colour	Info
Leotard (Cap Sleeved)	1 st Position	WHITE	<i>If boys are uncomfortable wearing a leotard, they may wear a t-shirt in replacement. NB: They may need to wear a leotard for exams.</i>
Boys Ballet Shorts	1 st Position	BLACK	
Ballet Socks	1 st Position	WHITE	
Low Heel Full Sole Tap Shoes	Bloch Timestep	BLACK	<i>We recommend all students have these tap shoes. They are the best quality & create the best sound for the student's feet. If tap shoes are worn without heel taps, you may be asked to purchase heel taps to help students execute the best footwork.</i>

KLDA reserves the right to adapt the uniform list.
In the event that any changes are made, the revised uniform shall be posted on the website www.kristielouisedanceacademy.co.uk immediately.

Grades 1-3

Girls			
Item	Brand	Colour	Info
Leotard (Cap Sleeved)	1 st Position	CORAL	
Cardigan (3/4 Length Sleeves)	1 st Position Cotton/Poly X Over	PALE PINK	Cardigans can be worn over leotards & students are able to keep these on to dance in. Any other layers will be asked to be removed during class
KLDA T-Shirt	Any Style	BLACK or Show T-Shirt	Students can wear their KLDA T-shirts as an alternative to cardigans. They may be asked to be removed if the teacher requires to see their body line/posture better.
Convertible Ballet Tights	Silky High Performance	PINK	Students can wear either tights or socks. Usually tights are preferred in the colder months & swapped for socks in the warmer months.
Footless Tights	Silky	BLACK/FLESH	Footless tights can be worn over the leotard, underneath & with or without shorts
Dance Shorts	KLDA Branded/Plain	BLACK	Dance shorts can be worn over the leotard in Modern classes. These can be worn over the leotard, or over tights if they are wearing tights as well.
Dance Leggings	KLDA Branded/Plain	BLACK	Dance leggings can be worn over the leotard in Modern classes. These can be worn over ballet tights.
Ballet Socks	1 st Position	PINK	
Low Heel Full Sole Tap Shoes	Bloch Timestep	BLACK	We recommend all students have these tap shoes. They are the best quality & create the best sound for the student's feet. If tap shoes are worn without heel taps, you may be asked to purchase heel taps to help students execute the best footwork.

HAIR: MUST BE SECURED OFF FACE & NECK (Short hair to be out of the face as best as possible).

Boys			
Item	Brand	Colour	Info
Leotard (Cap Sleeved)	1 st Position	WHITE	If boys are uncomfortable wearing a leotard, they may wear a t-shirt in replacement. NB: They may need to wear a leotard for exams.
KLDA T-Shirt	Any Style	BLACK/WHITE or Show T-Shirt	Students can wear their KLDA T-shirts as an alternative to leotards.
Track Pants	KLDA Branded/Plain	BLACK	
Boys Shorts	1 st Position	BLACK	Students can wear either shorts or leggings.
Ballet Socks	1 st Position	WHITE	
Low Heel Full Sole Tap Shoes	Bloch Timestep	BLACK	We recommend all students have these tap shoes. They are the best quality & create the best sound for the student's feet. If tap shoes are worn without heel taps, you may be asked to purchase heel taps to help students execute the best footwork.

Grades 4+

Girls			
Item	Brand	Colour	Info
Any Style Leotard	Any Style	BLACK	For classwork, students are able to wear ANY STYLE leotard. This is encouraged to be worn without bras being shown & students should be comfortable to wear the leotard with the correct underwear to remain smart.

KLDA reserves the right to adapt the uniform list.
In the event that any changes are made, the revised uniform shall be posted on the website
www.kristielouisedanceacademy.co.uk immediately.

			To find your own individual leotard we encourage you to look on www.dancedirect.com Or similar sites.
Cardigan (3/4 Length Sleeves)	1 st Position Cotton/Poly X Over	BLACK	Cardigans can be worn over leotards & students are able to keep these on to dance in. Any other layers will be asked to be removed during class
KLDA T-Shirt	Any Style	BLACK or Show T-Shirt	Students can wear their KLDA T-shirts as an alternative to cardigans. They may be asked to be removed if the teacher requires to see their body line/posture better.
Convertible Ballet Tights	Silky High Performance	PINK	During Modern, students use the convertible to change them into footless tights so they can dance bare feet.
Footless Tights	Silky	BLACK/FLESH	Footless tights can be worn over the leotard, underneath & with or without shorts
Dance Shorts	KLDA Branded/Plain	BLACK	Dance shorts can be worn over the leotard in Modern classes. These can be worn over the leotard, or over tights if they are wearing tights as well.
Dance Leggings	KLDA Branded/Plain	BLACK	Dance leggings can be worn over the leotard in Modern classes. These can be worn over ballet tights.
Socks	Trainer/Ankle	BLACK	
Full Sole Tap Shoes	Bloch/Capezio TeleTone Taps	BLACK	We recommend all students have these tap shoes. They are the best quality & create the best sound for the student's feet. Sometimes the brand depends on the students feet.

HAIR: MUST BE SECURED OFF FACE & NECK (Short hair to be out of the face as best as possible).

Boys			
Item	Brand	Colour	Info
Leotard (Cap Sleeved)	1 st Position	WHITE	If boys are uncomfortable wearing a leotard, they may wear a t-shirt in replacement. NB: They may need to wear a leotard for exams.
KLDA T-Shirt	Any Style	BLACK or Show T-Shirt	Students can wear their KLDA T-shirts as an alternative to leotards.
Track Pants	KLDA Branded/Plain	BLACK	Track Pants
Boys Shorts	1 st Position	BLACK	Students can wear either shorts or leggings.
Socks	Trainer/Ankle	BLACK	
Full Sole Tap Shoes	Bloch/Capezio TeleTone Taps	BLACK	We recommend all students have these tap shoes. They are the best quality & create the best sound for the student's feet. Sometimes the brand depends on the students feet.

All items above (except individual style leotards) can be purchased from our KLDA Shop located on our website.

KLDA reserves the right to adapt the uniform list.
In the event that any changes are made, the revised uniform shall be posted on the website www.kristielouisedanceacademy.co.uk immediately.

NATIONAL

Primary

Girls			
Item	Brand	Colour	Info
Leotard (Cap Sleeved) with Skirt Attached	1 st Position Milly Voile	CORAL	
Cardigan (3/4 Length Sleeves)	1 st Position Cotton/Poly X Over	PALE PINK	Cardigans can be worn over leotards & students are able to keep these on to dance in. Any other layers will be asked to be removed during class
Junior National Skirt	Made to Measure	BLACK (Coral, Pink, White Ribbons)	KLDA have National Skirts made specifically for each child. The waist is elasticated so the skirt will last many years. To order, you will need to measure the waist (around the tummy button) & length (waist to bottom of shin bone/top of ankle).
Convertible Ballet Tights	Silky High Performance	PINK	Students can wear either tights or socks. Usually tights are preferred in the colder months & swapped for socks in the warmer months.
Ballet Socks	1 st Position	PINK	
Low Heel with Pink Elastic National Shoes	1 st Position	BLACK	These shoes are ideal for students beginning National.

HAIR: MUST BE SECURED OFF FACE & NECK (Short hair to be out of the face as best as possible).

Boys			
Item	Brand	Colour	Info
Leotard (Cap Sleeved)	1 st Position	WHITE	If boys are uncomfortable wearing a leotard, they may wear a t-shirt in replacement. NB: They may need to wear a leotard for exams.
Boys Ballet Shorts	1 st Position	BLACK	
School Trousers	Any	BLACK	Can be worn as an alternative to shorts.
Ballet Socks	1 st Position	WHITE	
Boy School Shoes	Any	BLACK	

Grades 1-3

Girls			
Item	Brand	Colour	Info
Leotard (Cap Sleeved)	1 st Position	CORAL	
Cardigan (3/4 Length Sleeves)	1 st Position Cotton/Poly X Over	PALE PINK	Cardigans can be worn over leotards & students are able to keep these on to dance in. Any other layers will be asked to be removed during class
KLDA T-Shirt	Any Style	BLACK or Show T-Shirt	Students can wear their KLDA T-shirts as an alternative to cardigans.
Junior National Skirt	Made to Measure	BLACK (Coral, Pink, White Ribbons)	KLDA have National Skirts made specifically for each child. The waist is elasticated so the skirt will last many years. To order, you will need to measure the waist (around the tummy button) & length (waist to bottom of shin bone/top of ankle).
Convertible Ballet Tights	Silky High Performance	PINK	Students can wear either tights or socks. Usually tights are preferred in the colder months & swapped for socks in the warmer months.
Tights	Any	BLACK	See above.
Ballet Socks	1 st Position	PINK	See above.

KLDA reserves the right to adapt the uniform list.
In the event that any changes are made, the revised uniform shall be posted on the website www.kristielouisedanceacademy.co.uk immediately.

Low Heel with Pink Elastic National Shoes	1 st Position	BLACK	<i>These shoes are to be worn up until the student reaches Size 1.</i>
Low Heel with Buckled Strap National Shoes	Freed	BLACK	<i>When students reach Size 1 – they will need these National Shoes. Unfortunately KLDA, cannot purchase these shoes they will need to be purchased from Let's Dance Shop in Welwyn Garden City. https://letsdanceonline.co.uk</i>

HAIR: MUST BE SECURED OFF FACE & NECK (Short hair to be out of the face as best as possible).

Boys			
Item	Brand	Colour	Info
Leotard (Cap Sleeved)	1 st Position	WHITE	<i>If boys are uncomfortable wearing a leotard, they may wear a t-shirt in replacement. NB: They may need to wear a leotard for exams.</i>
KLDA T-Shirt	Any Style	BLACK or Show T-Shirt	<i>Students can wear their KLDA T-shirts as an alternative to leotards.</i>
School Trousers	Any	BLACK	<i>Can be worn as an alternative to shorts.</i>
Socks	Trainer/Ankle	BLACK	
School Shoes	Any	BLACK	

Grades 4+

Girls			
Item	Brand	Colour	Info
Any Style Leotard	Any Style	BLACK	<i>For classwork, students are able to wear ANY STYLE leotard. This is encouraged to be worn without bras being shown & students should be comfortable to wear the leotard with the correct underwear to remain smart. To find your own individual leotard we encourage you to look on www.dancedirect.com Or similar sites.</i>
Cardigan (3/4 Length Sleeves)	1 st Position Cotton/Poly X Over	BLACK	<i>Cardigans can be worn over leotards & students are able to keep these on to dance in. Any other layers will be asked to be removed during class</i>
KLDA T-Shirt	Any Style	BLACK or Show T-Shirt	<i>Students can wear their KLDA T-shirts as an alternative to cardigans.</i>
Senior National Skirt	Made to Measure	BLACK (Red, Pink, White Ribbons)	<i>KLDA have National Skirts made specifically for each child. The waist is elasticated so the skirt will last many years. To order, you will need to measure the waist (around the tummy button) & length (waist to bottom of shin bone/top of ankle).</i>
Convertible Ballet Tights	Silky High Performance	PINK	<i>Students can wear either tights or socks. Usually tights are preferred in the colder months & swapped for socks in the warmer months.</i>
Tights	Any	BLACK	<i>See above.</i>
Canvas Split Sole Ballet Shoes	Any	PINK/BLACK	<i>KLDA Students are required to wear ballet shoes in these grades. Pink are acceptable to be worn in class, but black shoes will need to be worn for exams & shows.</i>
Cuban Heel with Buckled Strap National Shoes	Freed	BLACK	<i>Unfortunately KLDA, cannot purchase these shoes they will need to be purchased from Let's Dance Shop in Welwyn Garden City. https://letsdanceonline.co.uk</i>

HAIR: MUST BE SECURED OFF FACE & NECK (Short hair to be out of the face as best as possible).

*KLDA reserves the right to adapt the uniform list.
In the event that any changes are made, the revised uniform shall be posted on the website www.kristielouisedanceacademy.co.uk immediately.*

Boys			
Item	Brand	Colour	Info
Leotard (Cap Sleeved)	1 st Position	WHITE	<i>If boys are uncomfortable wearing a leotard, they may wear a t-shirt in replacement. NB: They may need to wear a leotard for exams.</i>
KLDA T-Shirt	Any Style	BLACK or Show T-Shirt	<i>Students can wear their KLDA T-shirts as an alternative to cardigans.</i>
School Trousers	Any	BLACK	<i>Can be worn as an alternative to shorts.</i>
Socks	Trainer/Ankle	BLACK	
Ballet Shoes	Any	BLACK	<i>KLDA Students are required to wear ballet shoes in these grades.</i>
Ballroom Shoes	Any	BLACK	

All items above (except individual style leotards & buckled national shoes, ballroom shoes) can be purchased from our KLDA Shop located on our website.

STREET/COMMERCIAL STRENGTH/STRETCH JAZZ

Mini, Junior/Inter & Senior

Girls			
Item	Brand	Colour	Info
Any Style Leotard	Any Style	ANY COLOUR	<i>For classwork, students are able to wear ANY STYLE leotard. This is encouraged to be worn without bras being shown & students should be comfortable to wear the leotard with the correct underwear to remain smart. To find your own individual leotard we encourage you to look on www.dancedirect.com Or similar sites.</i>
KLDA T-Shirt	Any Style	BLACK or Show T-Shirt	<i>Leotard/crop top must be worn underneath.</i>
Crop Top	KLDA Branded/Any Style	BLACK/ANY COLOUR	<i>Students are able to wear crop tops to dance in. Any student dancing in a crop top must wear a t-shirt as well. Teachers may ask students to place t-shirts on for certain exercises etc...</i>
Footless Tights	Silky	BLACK/FLESH	<i>Footless tights can be worn over the leotard, underneath & with or without shorts</i>
Dance Shorts	KLDA Branded/Plain	BLACK	<i>Dance shorts can be worn over the leotard in Modern classes. These can be worn over the leotard, or over tights if they are wearing tights as well.</i>
Dance Leggings	KLDA Branded/Plain	BLACK	<i>Dance leggings can be worn over the leotard in Modern classes. These can be worn over ballet tights.</i>
Trainers	Any	ANY COLOUR	<i>Trainers need to be clean. Students may be asked to remove if they are making a mess in the studio.</i>
Jazz Shoes	Any	BLACK	<i>As an alternative to trainers.</i>
Bare Feet			<i>As an alternative to trainers.</i>

HAIR: MUST BE SECURED OFF FACE & NECK (Short hair to be out of the face as best as possible).

Boys			
Item	Brand	Colour	Info
KLDA T-Shirt	Any Style	BLACK or Show T-Shirt/WHITE	
Track Pants	KLDA Branded/Plain	BLACK	Track Pants

*KLDA reserves the right to adapt the uniform list.
In the event that any changes are made, the revised uniform shall be posted on the website www.kristielouisedanceacademy.co.uk immediately.*

Shorts	Plain	BLACK	
Trainers	Any	ANY COLOUR	<i>Trainers need to be clean. Students may be asked to remove if they are making a mess in the studio.</i>
Bare Feet			<i>As an alternative to trainers.</i>

RHYTHM TAP

Mini, Junior/Inter & Senior

Girls			
Item	Brand	Colour	Info
Any Style Leotard	Any Style	ANY COLOUR	<i>For classwork, students are able to wear ANY STYLE leotard. This is encouraged to be worn without bras being shown & students should be comfortable to wear the leotard with the correct underwear to remain smart. To find your own individual leotard we encourage you to look on www.dancedirect.com Or similar sites.</i>
KLDA T-Shirt	Any Style	BLACK or Show T-Shirt	
Footless Tights	Silky	BLACK/FLESH	<i>Footless tights can be worn over the leotard, underneath & with or without shorts</i>
Dance Shorts	KLDA Branded/Plain	BLACK	<i>Dance shorts can be worn over the leotard in Modern classes. These can be worn over the leotard, or over tights if they are wearing tights as well.</i>
Dance Leggings	KLDA Branded/Plain	BLACK	<i>Dance leggings can be worn over the leotard in Modern classes. These can be worn over ballet tights.</i>
Tap Shoes	See Grade Work	BLACK	<i>We recommend that this class is taken as an additional class to grade work. Same shoes as grade work are need to be worn.</i>

HAIR: MUST BE SECURED OFF FACE & NECK (Short hair to be out of the face as best as possible).

Boys			
Item	Brand	Colour	Info
KLDA T-Shirt	Any Style	BLACK or Show T-Shirt/WHITE	
Track Pants	KLDA Branded/Plain	BLACK	Track Pants
Shorts	Plain	BLACK	
Tap Shoes	See Grade Work	BLACK	<i>We recommend that this class is taken as an additional class to grade work. Same shoes as grade work are need to be worn.</i>

MUSICAL THEATRE

Mini, Junior/Inter & Senior

KLDA reserves the right to adapt the uniform list. In the event that any changes are made, the revised uniform shall be posted on the website www.kristielouisedanceacademy.co.uk immediately.

Girls			
Item	Brand	Colour	Info
Any Style Leotard	Any Style	ANY COLOUR	For classwork, students are able to wear ANY STYLE leotard. This is encouraged to be worn without bras being shown & students should be comfortable to wear the leotard with the correct underwear to remain smart. To find your own individual leotard we encourage you to look on www.dancedirect.com Or similar sites.
KLDA T-Shirt	Any Style	BLACK or Show T-Shirt	
Footless Tights	Silky	BLACK/FLESH	Footless tights can be worn over the leotard, underneath & with or without shorts
Dance Shorts	KLDA Branded/Plain	BLACK	Dance shorts can be worn over the leotard in Modern classes. These can be worn over the leotard, or over tights if they are wearing tights as well.
Dance Leggings	KLDA Branded/Plain	BLACK	Dance leggings can be worn over the leotard in Modern classes. These can be worn over ballet tights.
Trainers	Any	ANY COLOUR	Trainers need to be clean. Students may be asked to remove if they are making a mess in the studio.
Jazz Shoes	Any	BLACK	As an alternative to trainers.
Bare Feet			As an alternative to trainers.

HAIR: MUST BE SECURED OFF FACE & NECK (Short hair to be out of the face as best as possible).

Boys			
Item	Brand	Colour	Info
KLDA T-Shirt	Any Style	BLACK or Show T-Shirt/WHITE	
Track Pants	KLDA Branded/Plain	BLACK	Track Pants
Shorts	Plain	BLACK	
Trainers	Any	ANY COLOUR	Trainers need to be clean. Students may be asked to remove if they are making a mess in the studio.
Jazz Shoes	Any	BLACK	As an alternative to trainers.
Bare Feet			As an alternative to trainers.

CONTEMPORARY ACRO

Mini, Junior/Inter & Senior

Girls			
Item	Brand	Colour	Info
Any Style Leotard	Any Style	ANY COLOUR	For classwork, students are able to wear ANY STYLE leotard. This is encouraged to be worn without bras being shown & students should be comfortable to wear the leotard with the correct underwear to remain smart. To find your own individual leotard we encourage you to look on www.dancedirect.com Or similar sites.
KLDA T-Shirt	Any Style	BLACK or Show T-Shirt	To be worn over leotard.

KLDA reserves the right to adapt the uniform list.
In the event that any changes are made, the revised uniform shall be posted on the website www.kristielouisedanceacademy.co.uk immediately.

Footless Tights	Silky	BLACK/FLESH	<i>Footless tights can be worn over the leotard, underneath & with or without shorts</i>
Dance Shorts	KLDA Branded/Plain	BLACK	<i>Dance shorts can be worn over the leotard in Modern classes. These can be worn over the leotard, or over tights if they are wearing tights as well.</i>
Dance Leggings	KLDA Branded/Plain	BLACK	<i>Dance leggings can be worn over the leotard in Modern classes. These can be worn over ballet tights.</i>
Bare Feet			

HAIR: MUST BE SECURED OFF FACE & NECK (Short hair to be out of the face as best as possible).

Boys			
Item	Brand	Colour	Info
Any Style Leotard	Any Style	ANY COLOUR	<i>For classwork, students are able to wear ANY STYLE leotard. To find your own individual leotard we encourage you to look on www.dancedirect.com Or similar sites.</i>
KLDA T-Shirt	Any Style	BLACK or Show T-Shirt/WHITE	
Track Pants	KLDA Branded/Plain	BLACK	Track Pants
Shorts	Plain	BLACK	
Bare Feet			

- In colder months, students may wear KLDA hoodies, sweatshirts & onesies to attend classes & warm up in.
- Students may be asked to remove these items, if the teacher feels that the student is warm enough or needs to see their bodies for the movement they are executing.
- If teachers feel that the uniform is not appropriate or correct for class, students may be asked to remove those items.
- If teachers feel that the hair style is not appropriate or correct for class, students may be asked to tie up their hair with spare hairbands.
- If a student forgets their uniform, they must explain & apologise to the teacher.
- If students regularly fail to meet uniform/hair standards, this may affect their ability to dance in the class.

All KLDA Branded uniform can ONLY be purchased on our website.

We recommend that if you are unsure of sizes to visit Let's Dance Shop in Welwyn Garden City.

<https://letsdanceonline.co.uk>

Please note, this is an independent dance shop & prices may slightly vary to KLDA prices.

ALL BUCKLED NATIONAL SHOES MUST BE BROUGHT FROM HERE!

KLDA reserves the right to adapt the uniform list. In the event that any changes are made, the revised uniform shall be posted on the website www.kristielouisedanceacademy.co.uk immediately.

We also recommend that all canvas ballet shoes are tried on before purchase as sometimes they do not fit. Please make sure that feet are not scrunched up, tight or uncomfortable – but do not buy baggy shoes.